

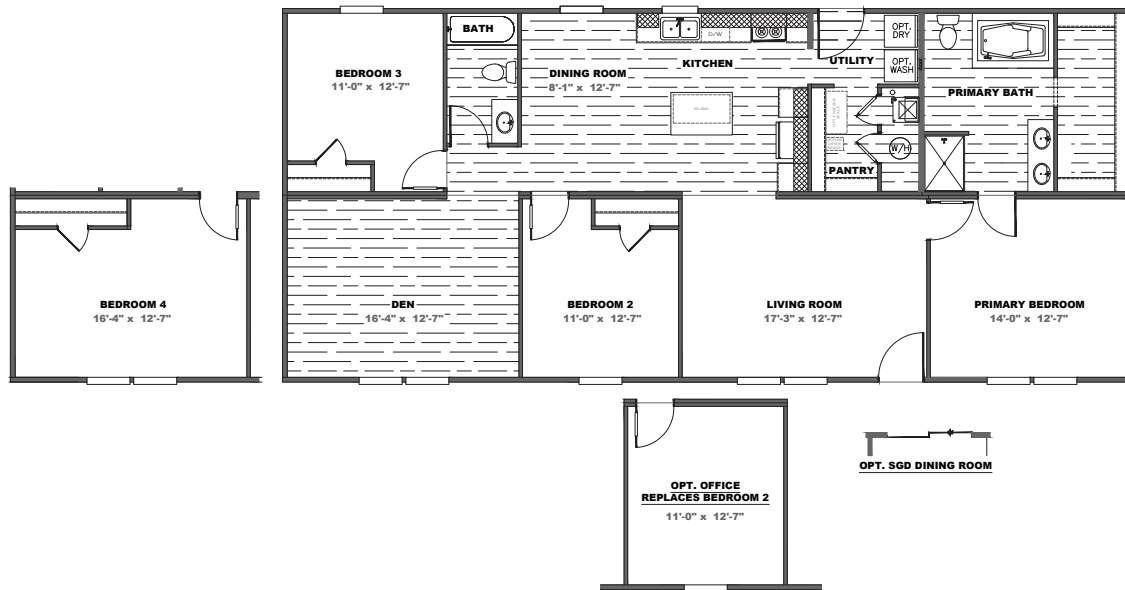
# EAGLE

SERIES

Appalachia  
myappalachiahome.com

## THE EAGLE 60

3/4 beds | 2 baths | 1,580 sq. ft. | 28x60



### POPULAR STANDARD FEATURES

- 8' Flat Ceilings
- 30" Overhead DuraCraft Cabinets
- Picture Frame Cabinet Doors (w/ Hidden Hinges)
- Kitchen Island w/ Overhang
- Glamour Bath w/ Montrose Fiberglass Tub
- 6 Panel Steel Front Door
- 2 Panel Arched Interior Door
- Cottage Rear Door w/ 9 Light Window
- Low E Argon Gas Insulated Windows
- ecobee Smart Thermostat Lite 5
- Exterior GFI Recept
- Double Marriage Wall Construction
- 5.2lb. Rebond Pad
- Dishwasher
- Smooth Top Range
- Walk-In Pantry
- 25 oz. R2X Stain Resistant Carpet

### AVAILABLE OPTIONS

- OSB Wrap
  - Dormer
  - Sliding Glass Door (Model Specific)
  - 2x6 Sidewalls with R-21 Insulation
  - Recessed Frame
  - Front Storm Door (Ship Loose)
  - Wind Zone II w/OSB
  - Wind Zone III w/OSB
  - 2" Mini Blinds
  - Stainless Steel Appliances
  - Side by Side Refrigerator
  - Ice maker
  - Gas Range
  - Gas Furnace
  - 50 Gallon Water Heater
  - Exterior GFI (Front)
  - Exterior Faucet (Front/Rear)
  - Water Cut Offs
  - Elongated Commodes
  - Omit Tub (Primary Bath)
  - Ceramic Sinks
  - Fiberglass Tub/Showers
  - Energy Star Ceiling Fans
  - Wire and Brace
  - Optional Office (Where Applicable)
  - Wire Shelving in Utility Room
  - Washer/Dryer
- SIDING**
- \_\_\_\_\_
- DECOR PACKAGES**
- Brown
  - White
  - Grey
- ADDITIONAL VINYL FLOORING**
- Throughout
  - Living Room
  - Primary Bedroom
  - Secondary Bedrooms: #s \_\_\_\_\_
- SHUTTERS**
- \_\_\_\_\_
- \*Please reference website for colors



Customer Name \_\_\_\_\_ Customer County/State \_\_\_\_\_

Customer Email \_\_\_\_\_ Customer Signature \_\_\_\_\_