



THE PHOENIX

Proudly built in
HAMLET, NC



3 BEDROOMS

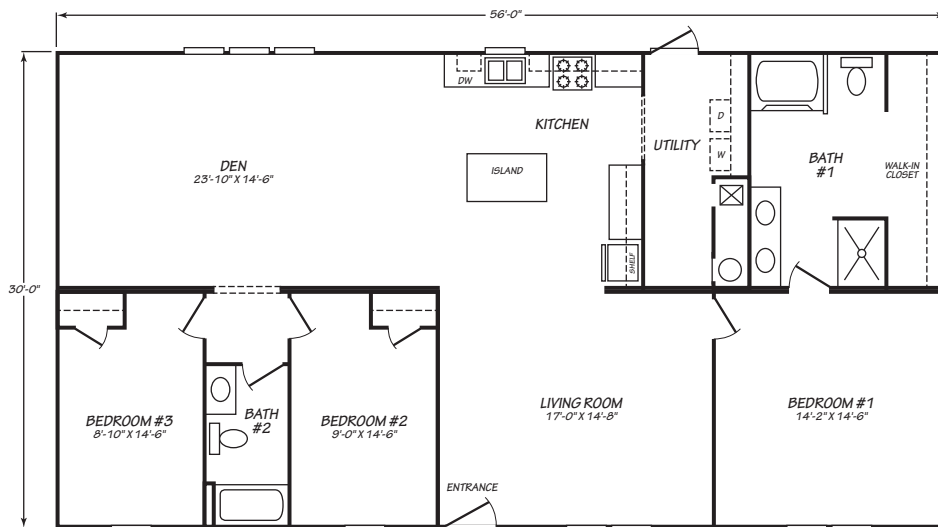


2 BATHS



1,680 SQ FT

The perfect balance of comfort and reliability in an affordable package. Introducing the Phoenix manufactured home series from Cavco North Carolina – a spacious floorplan for the growing family, impeccably designed to be your new forever home. With a layout ideal for entertaining, the open concept living room allows hosts to keep an eye on their meal preparation without missing a minute of the conversation. Complete with three bedrooms, two baths and washer/dryer hookup, the Phoenix is move-in ready.



©2023 CAVCO HOMES INC. ALL RIGHTS RESERVED

KITCHEN
DINING NOOK
KITCHEN APPLIANCES
LED CAN LIGHTS THROUGHOUT
METAL FAUCETS

LIVING ROOM
LOW-E WINDOWS
2X8 FLOOR JOISTS
8' FLAT CEILINGS

BATHROOM
METAL FAUCETS
SEPARATE TUB AND SHOWER

CONTACT: Will Hill SALES MANAGER
will.hill@cavco.com
865-456-0234

WWW.CAVCO.COM